

Customer :

customer

Customer part :

customer part

Comment :

Comment

S1=4.72

S2=8.25

Tmax=465

Tp S2=504.0

PI=0.36

HI=95

Sample =1700.60

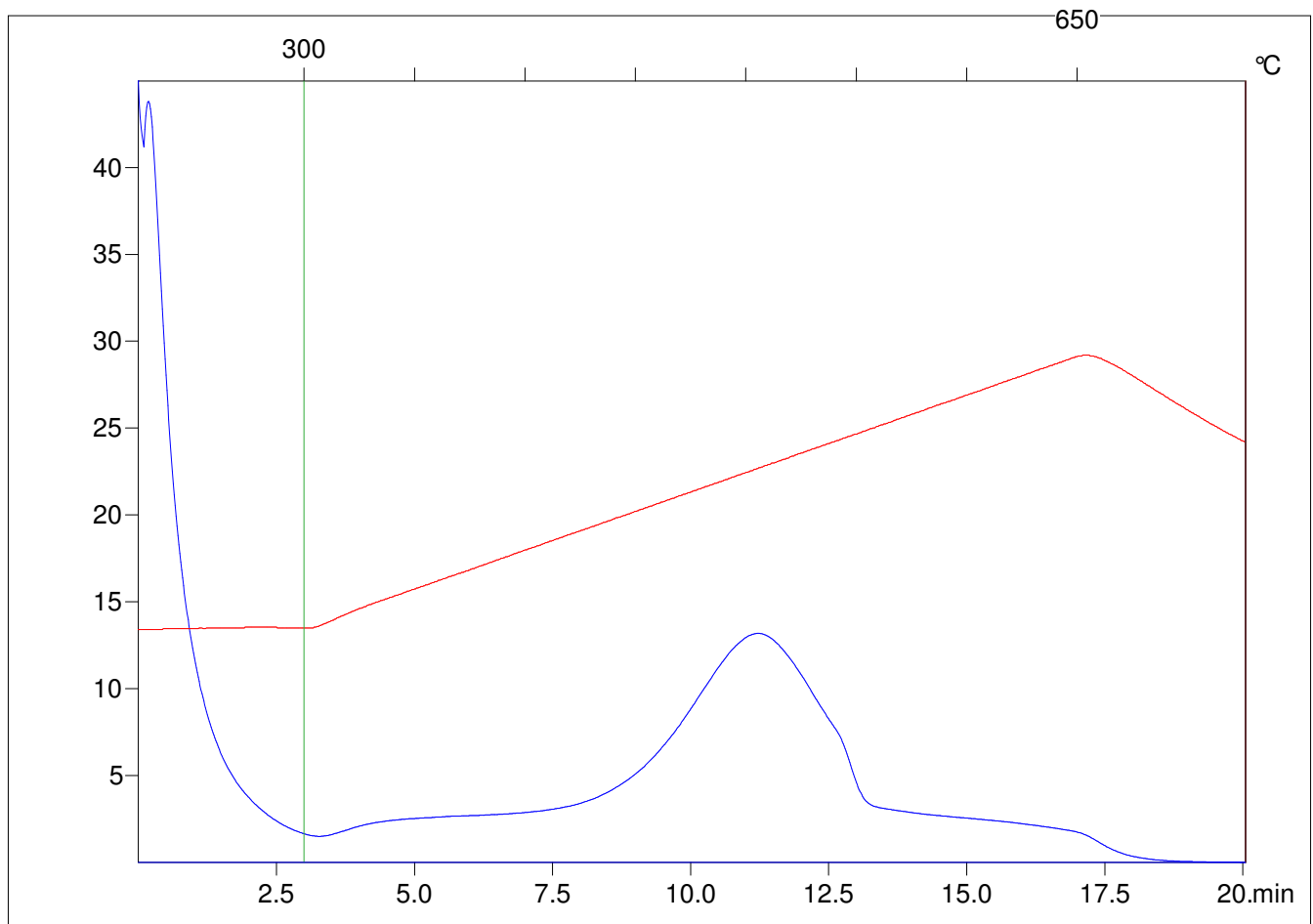
Method =Bulk Rock

Cycle=Basic

KFID(10\*9)=1444

Qty =69.9

TOC=8.67



C:\VINC\PK1\_1792\PK082.R00 : FID pyrolysis graphic

State Ok

Pyro Status Negative value

Oxi Status Negative value